



Vertebral column

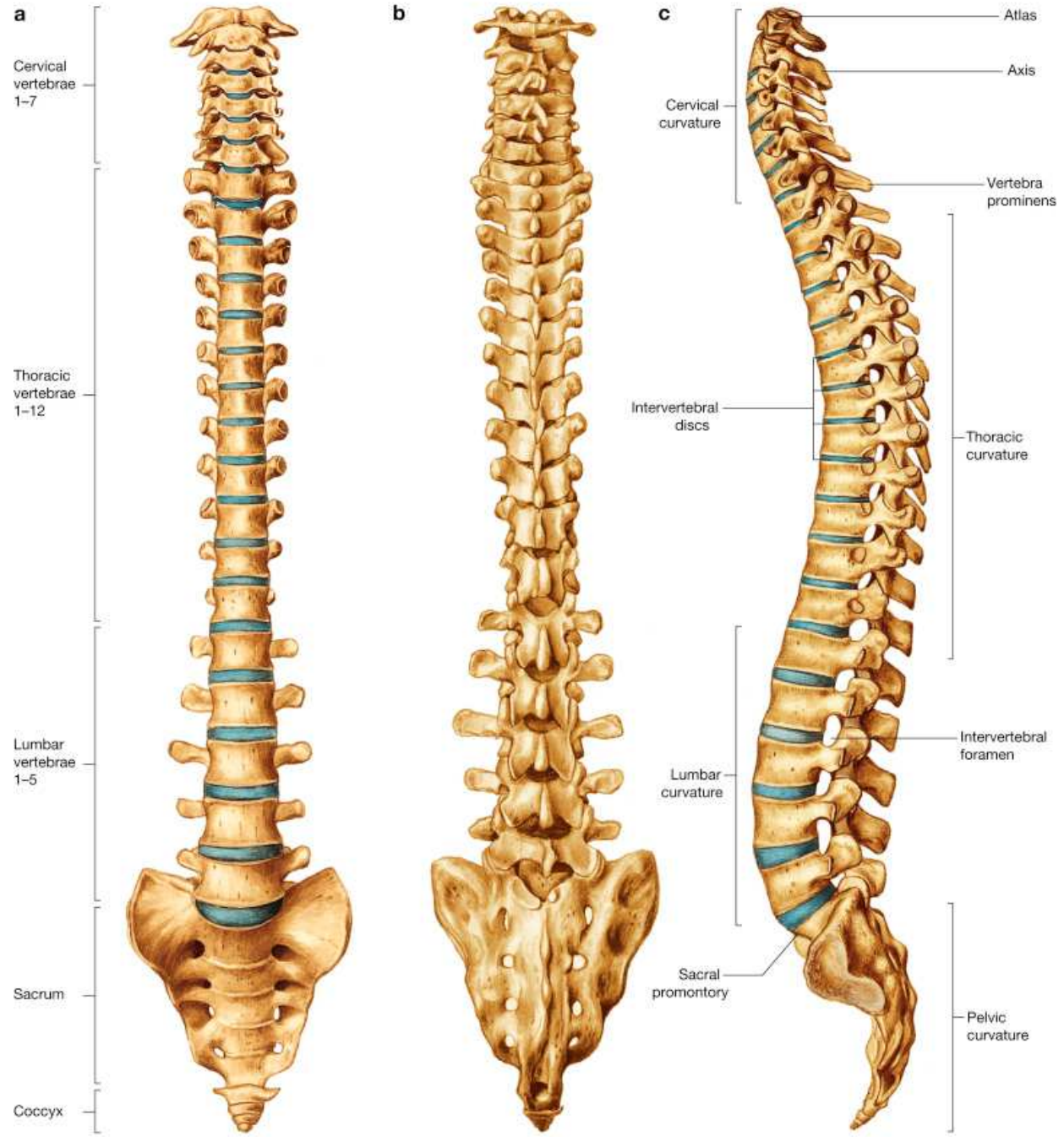
Anatomy Department
Beni-Suef University

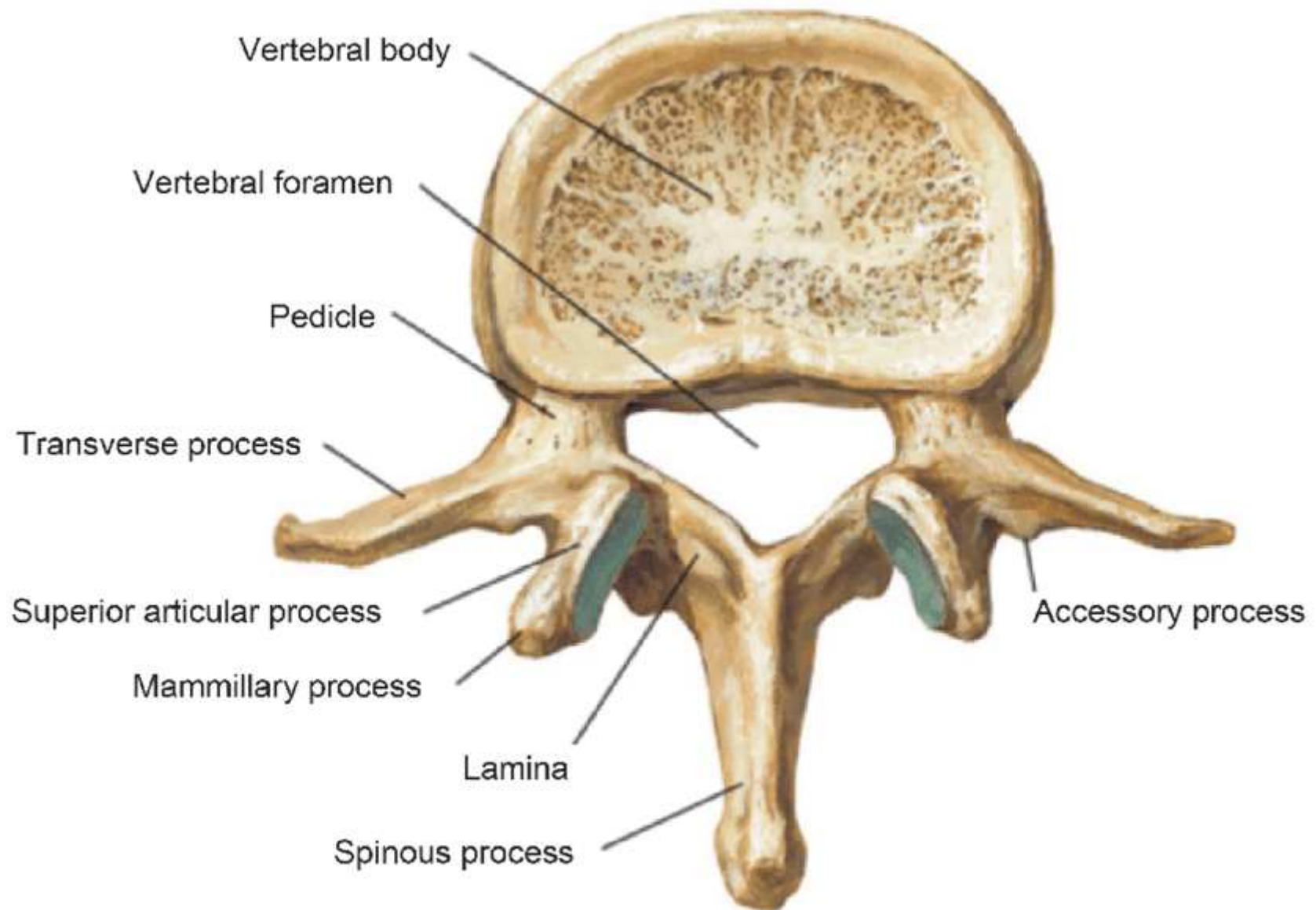
Intended learning objectives (ILOs)

By the end of this lecture the student will be able to:

1. Describe the length, functions and structure of the vertebral column.
2. Describe the intervertebral disc.
3. Identify parts of the typical vertebra.

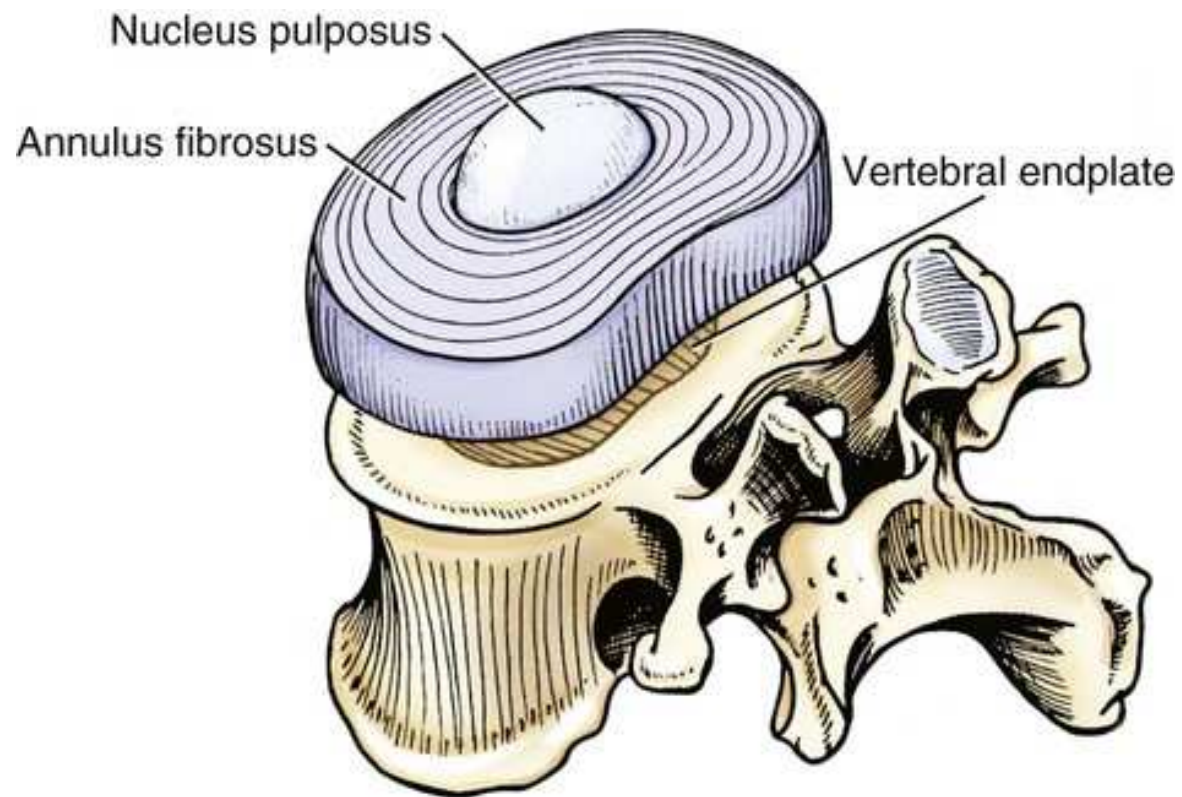
- Average length: 70 cm in males, 60 cm in females
- Functions
- Structure of vertebral column: 7 cervical, 12 thoracic, 5 lumbar, 5 sacral & 1 coccyx





**L2 vertebra:
superior view**

Intervertebral disc



Quiz

1. Regarding the average length of adult male vertebral column, one is correct:

a.100 cms

b.50 cms

c.40 cms

d.70 cms

2. Regarding the average length of female vertebral column, one is correct:

a.70 cms

b.65 cms

c.50 cms

d.55 cms

e.60 cms

3. The adult vertebral column typically contains

a. 26 vertebrae

b. 28 vertebrae

c. 30 vertebrae

d. 32 vertebrae

4. The typical vertebra contains

a.4 processes

b.5 processes

c.6 processes

d.7 processes

e.8 processes

Thank you